

Understanding DTOC Performance in London

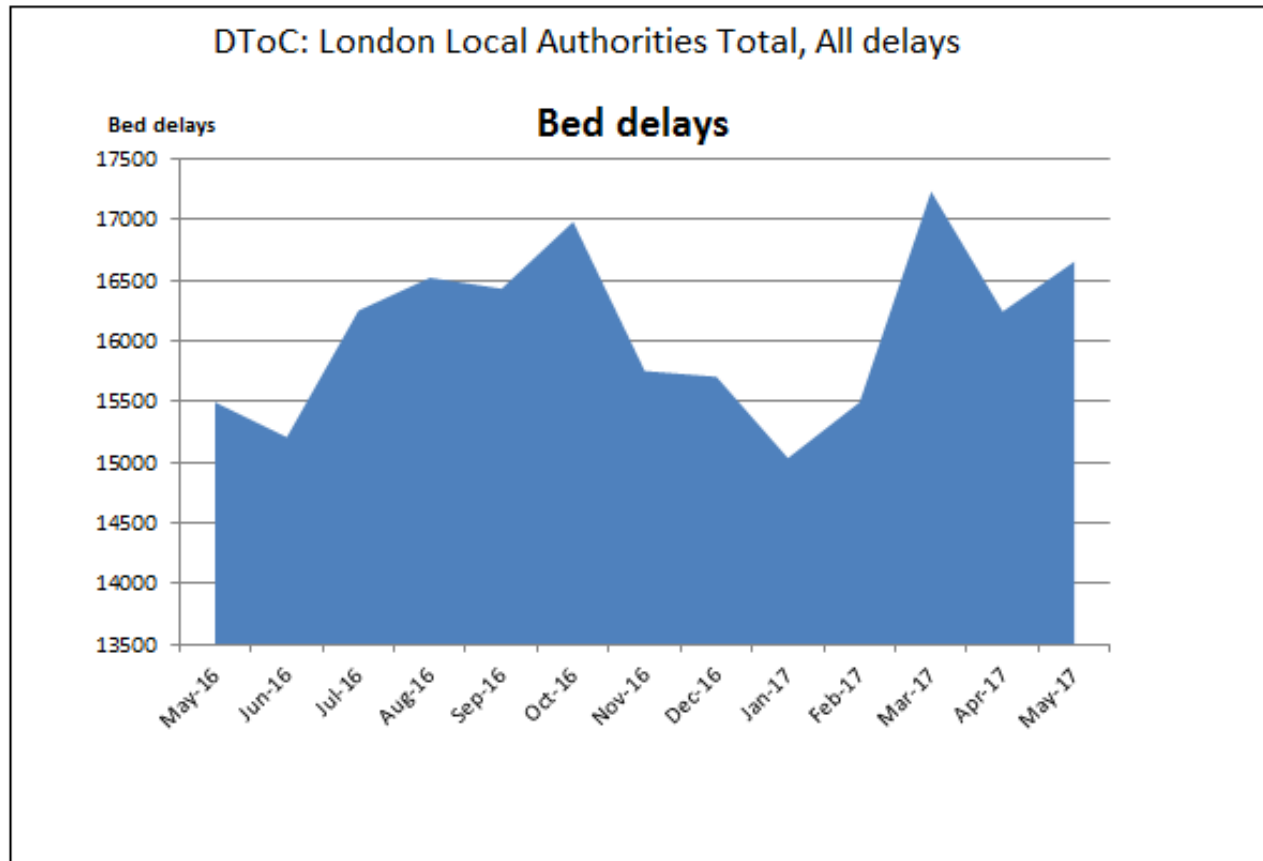
Grainne Siggins

Director of Adult Social Services,
London Borough of Newham

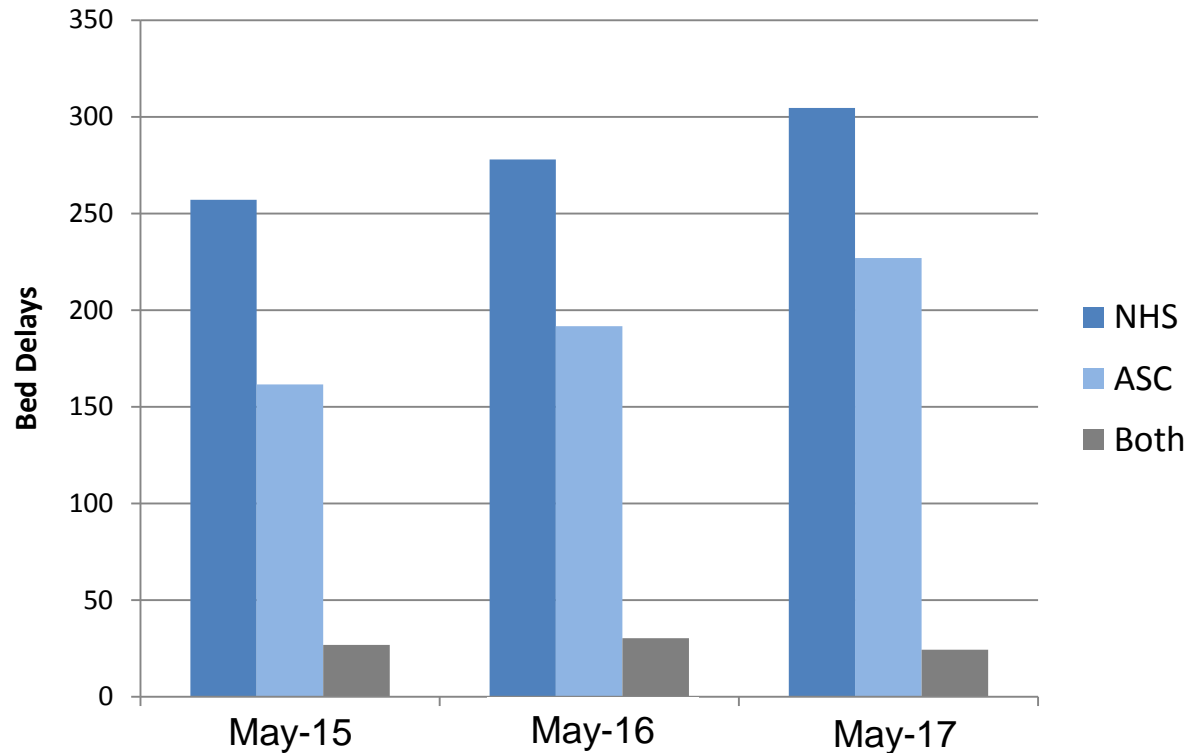


The number of patients delayed (DTOCs) across London has increased by 20% over the last two years

- The total number of patients delayed in London has increased by 20% from 445 in May 2015 to 537 in May 2017.
- In March 2017, the total number of bed days in London reached 556.

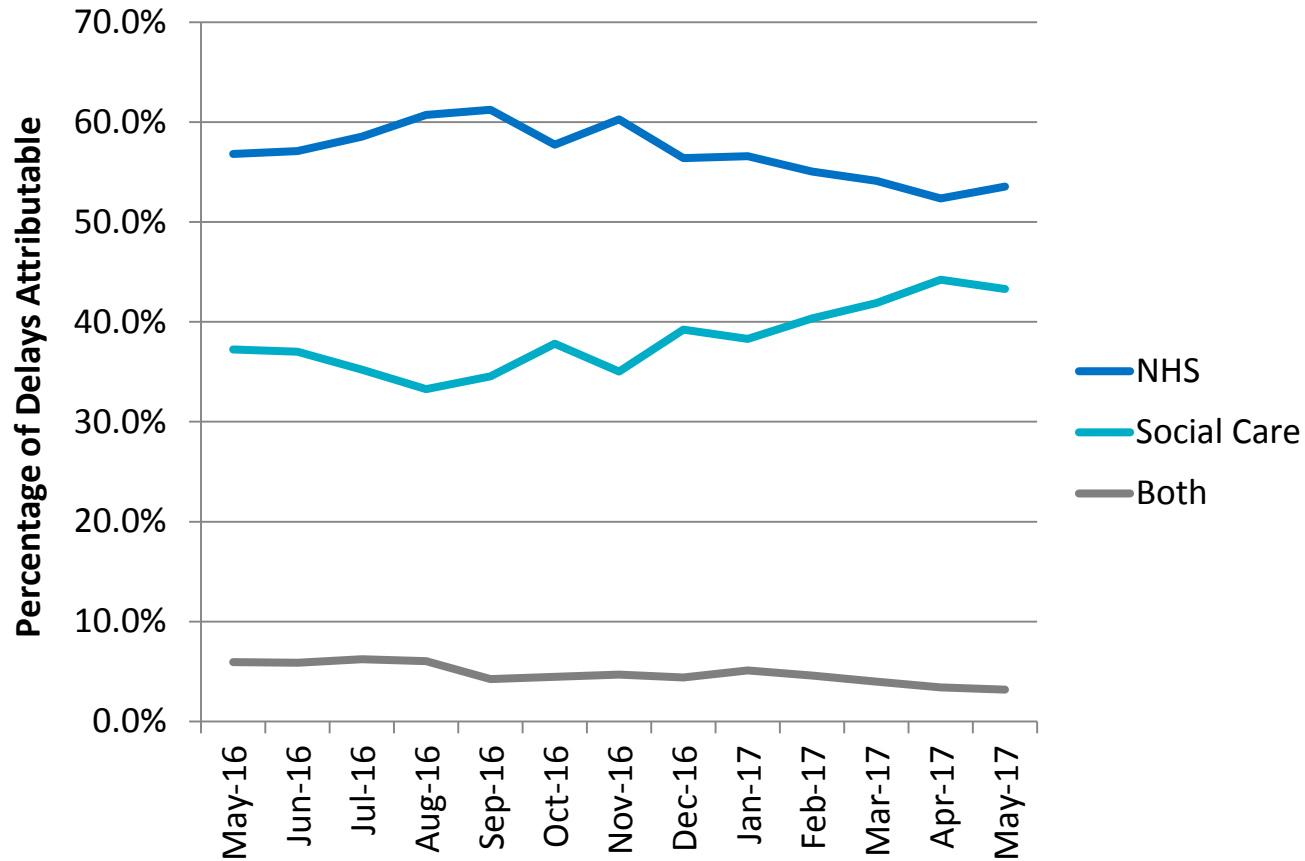


There has been a steady rise in the number of NHS and Adult Social Care attributable days over the last two years



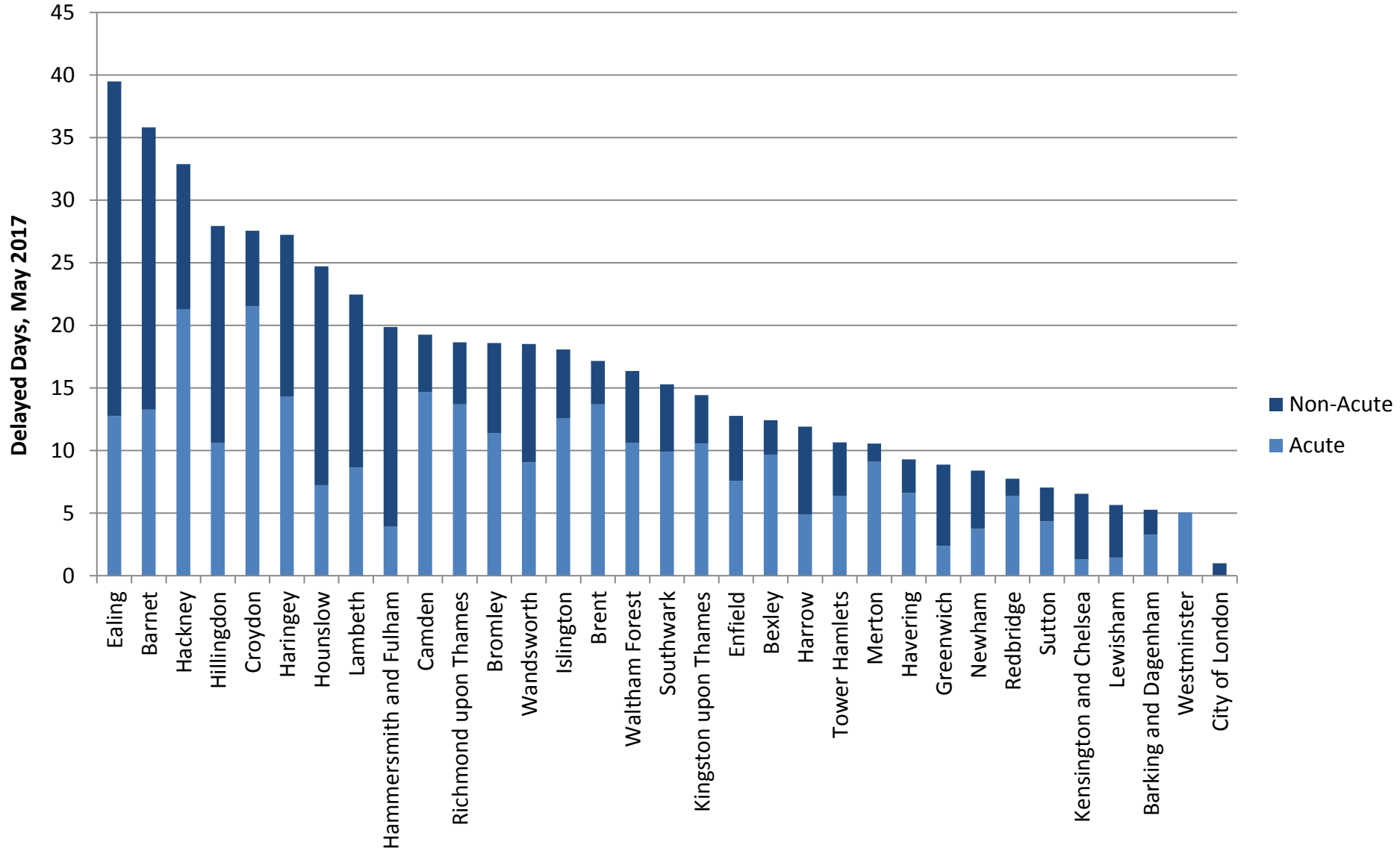
- In May 2017 (the last validated position) NHS delays accounted for 305 delayed days, and ASC accounted for 227 delayed days.

Over the past year, the gap between the proportion of NHS and Social Care accountable delays has reduced

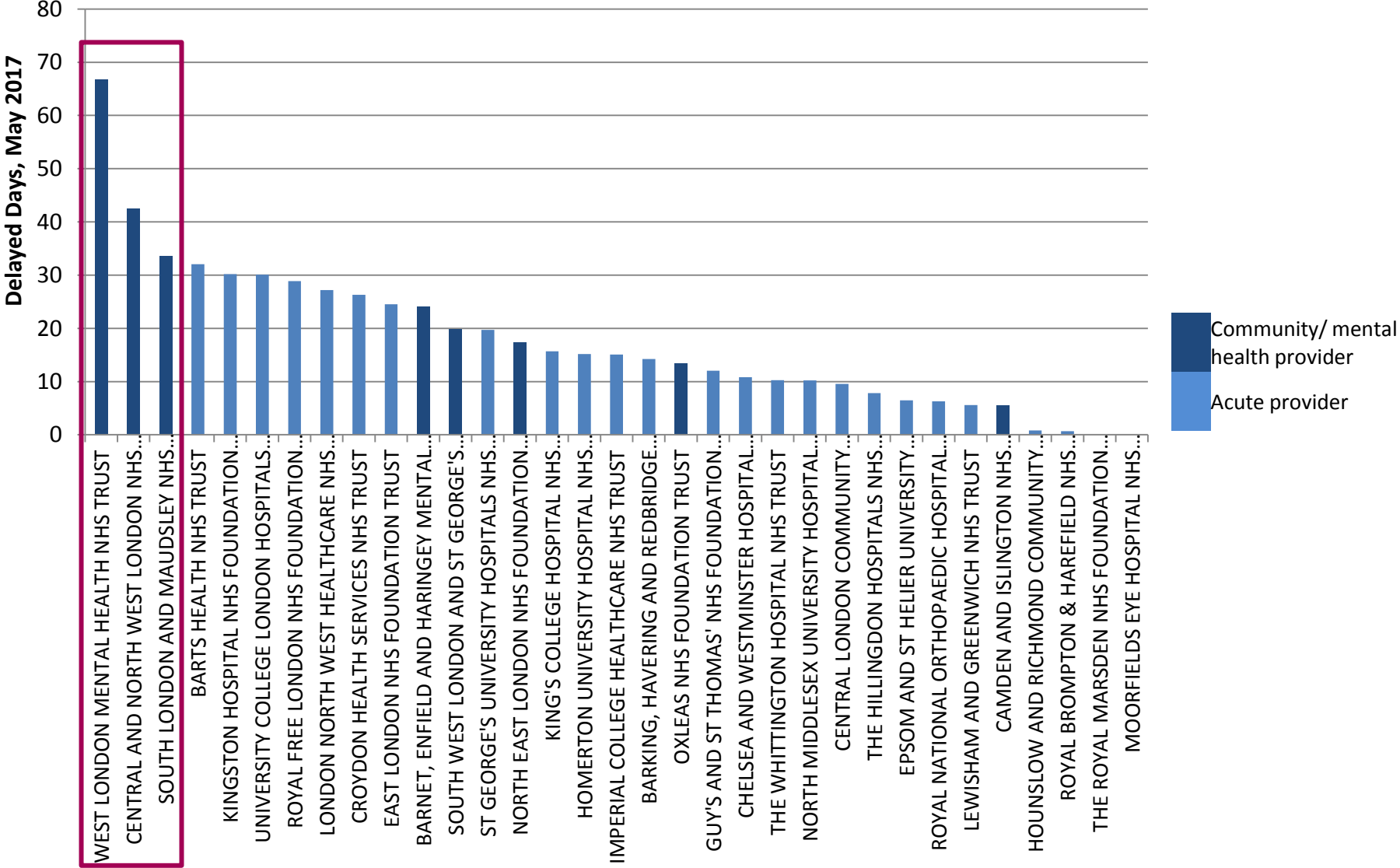


- From May 2016 to May 2017, the proportion of NHS attributable delays has reduced by 3.3%, and the proportion of ASC attributable delays has increased by 6.0%.

There is significant variance in the number of delayed days by Local Authority



Some of London's most challenged Trusts are community and mental health providers



For both NHS and Social Care delays, waiting for further services accounts for more than 55% of delays

DTOC reasons for Delay in London - May 17

